



Advanced Heating
& Hot Water Systems

www.htproducts.com

EVERLAST

RESIDENTIAL

Stainless Steel
Electric Water Heater

BUILT
TO LAST
LONGER

No Anode
Rods Needed

Lightweight
and Durable

NO ANODE
RODS NEEDED
RESISTS
SCALE BUILD UP
LIGHT
WEIGHT



INDUSTRY
BEST
LIFETIME
WARRANTY
(Residential)

40 Gallons
and
52 Gallons



EVERLAST

Stainless Steel Electric Water Heater

THERMOSTAT AND HIGH LIMIT CONTROLS:

Residential Temp: Min 110°F Max 150°F

HOT WATER CONNECTION:

Outlet connection on the top of the tank (with built in Heat Traps)

THE FINEST PROTECTION:

Laser welded through a concentrated heat source producing high quality, long lasting, 316L stainless steel tank construction (**lightweight**) - Superior corrosion resistance, eliminates the need for anode rods, protects against harsh water conditions for a lifetime of durability against leaks - Fantastic Limited Warranty

MINIMAL HEAT LOSS:

Heavy-duty insulation

STAINLESS STEEL INCOLOY ELEMENTS:

Low watt operation; Stainless steel screw plugs; Increases corrosion resistance for extended, longer element life



STANDARD FEATURES

- Stainless Steel Tank
- Heavy Duty Insulation
- Electrical Connection Box
- Limited LIFETIME Warranty for Residential Unit
(10 year warranty if not registered online)

IN THE BOX

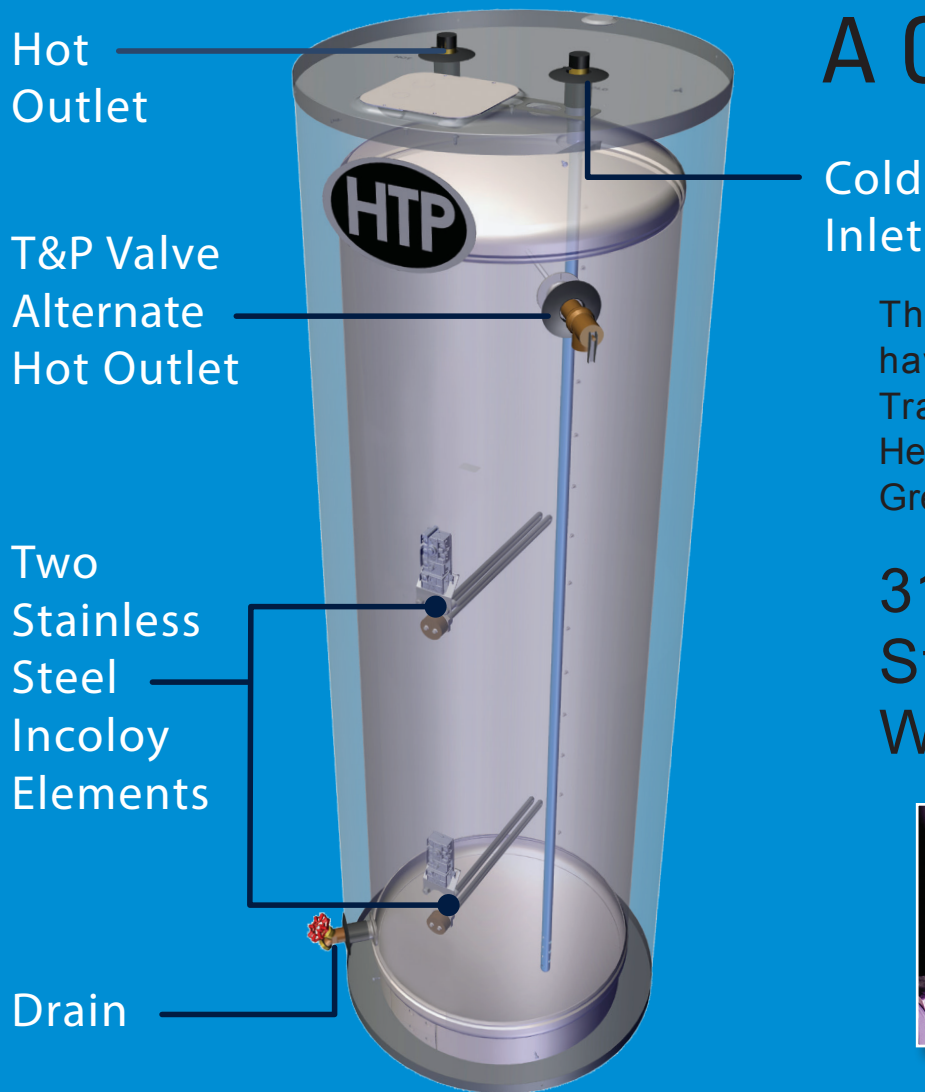
- T & P Relief Valve
- Installation Manual
- Brass Full Port Drain Valve

**NO ANODE
RODS NEEDED**
RESISTS
SCALE BUILD UP
**LIGHT
WEIGHT**

EVERLAST ELECTRIC : STAINLESS STEEL WATER HEATER

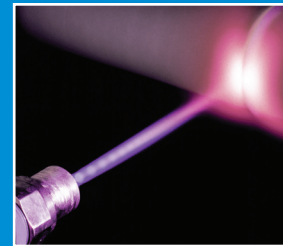
The Everlast Electric Water Heater combines high quality stainless steel construction and energy efficient operation, providing long draws of hot water without consuming large amounts of energy. A cleverly designed water connection directs cold water to the heating element near the bottom of the tank to minimize the mixing of cold and hot water. Durable components, low standby heat losses, high recovery rates, and the industry's strongest warranty make the Everlast Electric Water Heater an ideal choice for electric water heating needs.

A Closer Look



The Inlet & Outlet have Built in Heat Traps, Keeping the Heat in the Tank for Greater Efficiency

316L Stainless Steel - Laser Welded Tank



Our Components are Made of Durable Materials:

Inlet and Outlet Nipples Constructed of Durable Brass

Stainless Steel Incoloy Elements

316 L Stainless Steel Tank Construction

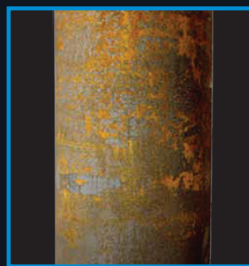
Made with High Grade 316L Stainless Steel Materials

The Advantages

Stainless Steel VS Glass-Lined



HTP's
Stainless Steel Tank
Lightweight

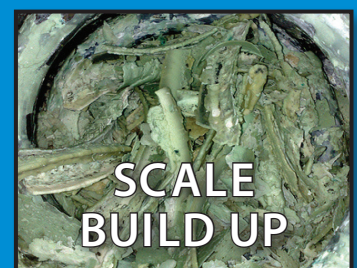


Top Competitor's
Glass-lined Tank
Very Heavy

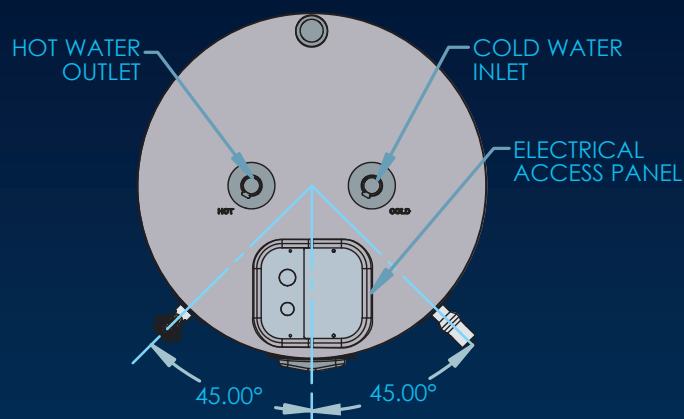
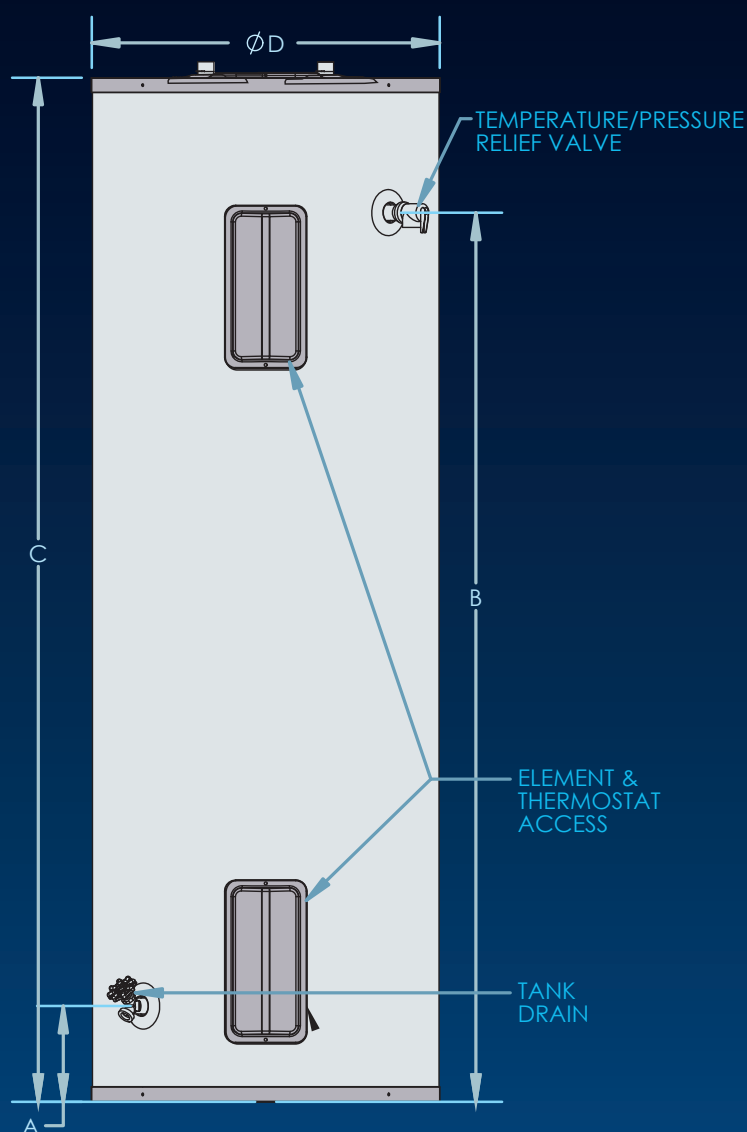
Minimizes Scale Build Up
Prolongs Tank Life
No Need for Anode Rods
Lightweight Construction

NO Anode Rods Needed!

All coated tanks require anodes to delay the inevitable corrosion and tank failure. The average residential water heater lasts about 13 years. The Everlast stainless steel tank will outlast any coated steel tank in the market.



Dimensions & Specifications



The Inlet & Outlet have Built in Heat Traps, Keeping the Heat in the Tank for Greater Efficiency

SPECIFICATIONS AND DIMENSIONS						WATER TEMPERATURE RATINGS		
Models	Gal.	A	B	C	D	Minimum Delivered Temp.	Maximum Delivered Temp.	High Temp. Limit
EVR040C2X045	40	5.75"	46"	54.25"	19.5"	110°F 43.3°C	150°F 65.5°C	170°F 76.6°C
EVR040C2X055								
EVR052C2X045	52	5.75"	58.25"	66.75"	19.5"			
EVR052C2X055								

Residential Models	Wattage	Voltage	Safety Listing	First Hour Rating	Recovery @ 90° F Rise	Energy Factor	Shipping Weight
EVR040C2X045	4500	240	UL174	59 Gallons	20 Gallons	.95	104 lbs
EVR040C2X055	5500			64 Gallons	25 Gallons		
EVR052C2X045	4500	240		66 Gallons	20 Gallons	.94	118 lbs
EVR052C2X055	5500			71 Gallons	25 Gallons		

Energy Factor based on D.O.E. (Department of Energy) test procedures. Heaters furnished with standard 240 volt AC, single phase non-simultaneous wiring.

In accordance with our company policy of ongoing product improvement, HTP Inc. reserves the right to make changes without prior notice. www.htproducts.com • MKTLIT-59 • 04 / 2015 © HTP